



# TRELBA SYE

By Wesley H. Bateman

Copyright © 2006 Ra Research Society

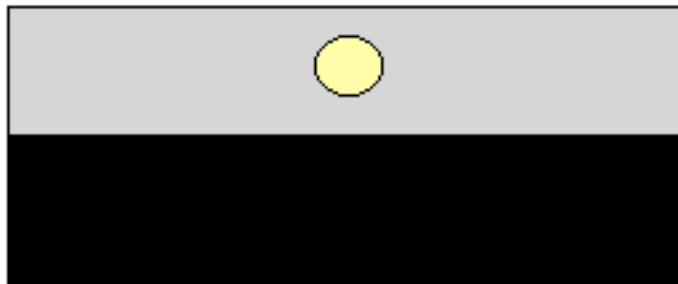
## **Trelba Sye**

**In November 1963 just prior to the assassination of President John F. Kennedy my wife Jo Nell, daughter Deanna, and I were visiting with family in Southern Idaho.**

**It was during this visit to my relatives, that I reluctantly revealed that I recently began to hear voices in my mind that claimed they originated from real flesh and blood extraterrestrials that were visiting the Earth. This announcement went over like a lead balloon.**

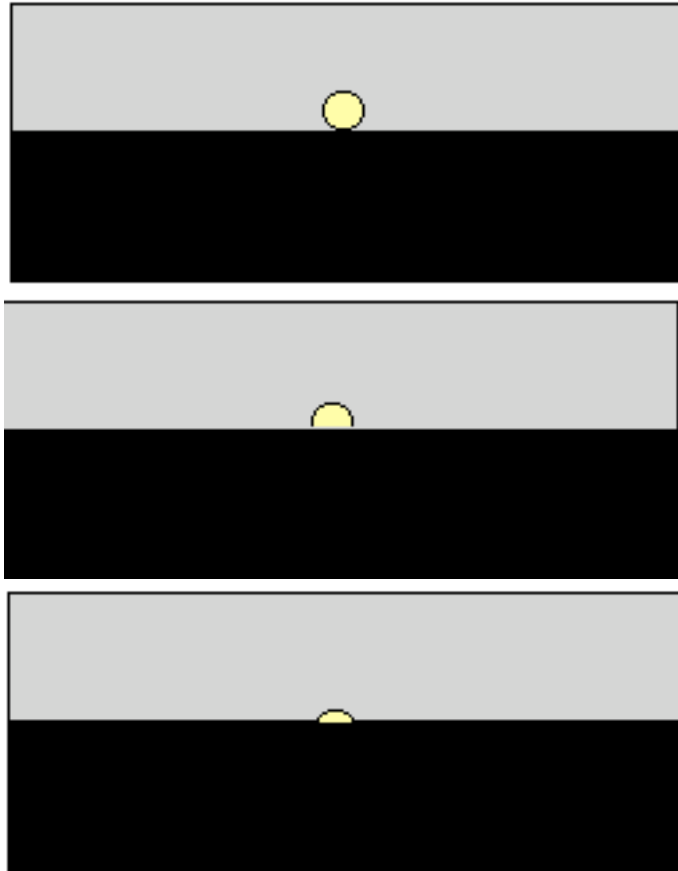
**After a few days passed I received a telepathic message to go to a particular location, and look into the sky in a westerly direction. Those around me, took this as an opportunity to prove once and for all just how crazy I really was.**

**Several station wagons were loaded and off we went to the designated location. After arriving we peered westward into the twilight. Then a glowing ball of light appeared and slowly passed before us moving to the East.**



**Again telepathically, I was told to pay close attention to where the spacecraft went. After relating this information to the others, one of them said: “You are really lucky Wes, we were seriously considering having you committed.”**

**We continued watching the spacecraft travel east. Then it stopped and gradually got lower and lower, until it disappeared from sight.**



**This observation left us with the question which was: Did the craft fly over the horizon, or did it land and disappear underground? The fact that it did not become smaller in size when it disappeared convinced us that it went underground.**

**My brother-in-law Bill told us that he knew exactly the spot where the craft disappeared.**

**Later that night he showed me the spot on a map.**

**The next morning my mother, sister, wife, daughter and myself drove to the closest spot we could find that was located near the place Bill had marked on the map.**

**We found ourselves on the western cliff that over looks the Snake River. From this position I surveyed the eastern, gray basalt cliffs with binoculars.**



**Western Bank of the Snake River**

**As I scanned the distant cliffs I noticed that there were a number of perfectly square sections in the cliff face that were rust colored.**

**A few days later we visited the area and took black and white photographs. We also became aware that the large rust colored squares were once openings (doors or bays) that were deliberately sealed up at sometime in the very ancient past. There were also signs that at some unknown time in history, someone attempted to dig a tunnel into one of the rust colored sections.**



**Standing in front of the “main door” and holding a compass we noticed the compass needle rocked back and forth over a 180 degree arc. This suggested that something unseen, with magnetic properties was approaching in our direction, and then receding from us. This action was obviously affecting the orientation of the compass needle.**

**Was the ET craft we saw land and disappear several nights before located somewhere inside the cliff ... behind the sealed entrance? As instructed by the Extraterrestrials we left the area and, let the city sleep another nine years.**

**Nine years later in 1972 the Extraterrestrials suggested that we once again visit the underground city, that was built during one of the Earth’s six “Golden Ages.” The extraterrestrials called this city “Trelba Sye.” We found the place totally unchanged, but somewhat more concealed by foliage.**

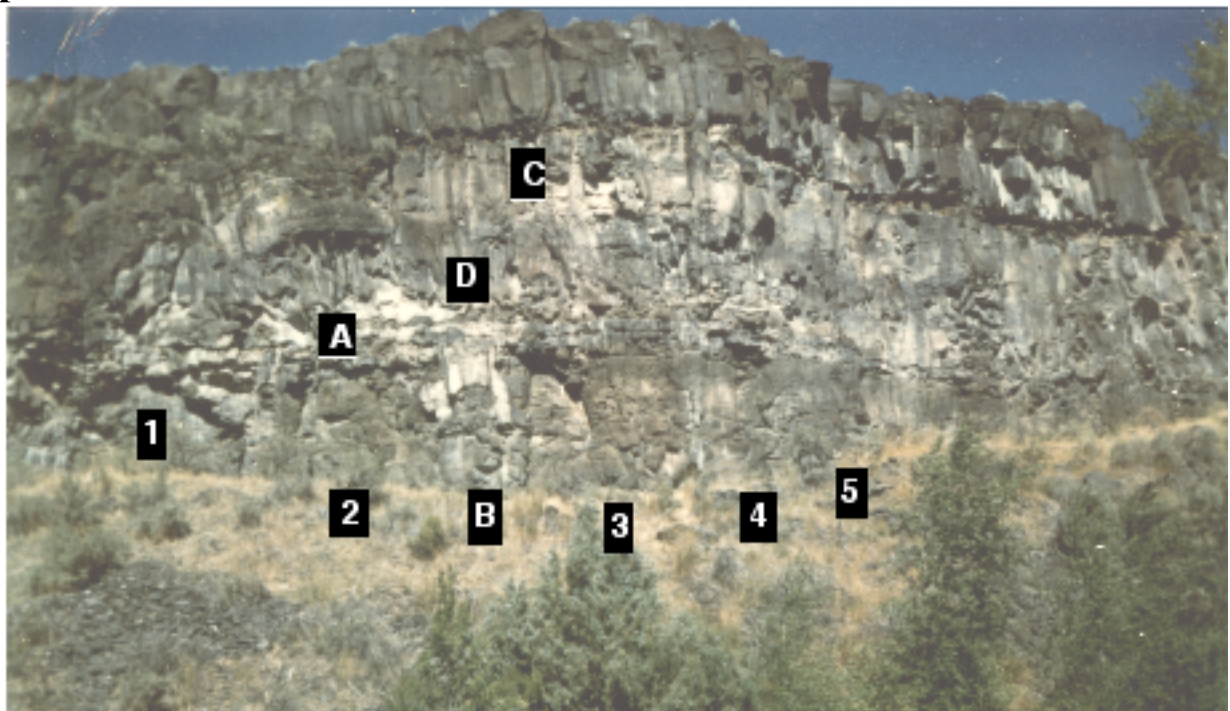
**During the 1972 expedition we took a number of color photographs which are presented and described next.**

**The following picture contains the five doors of the ancient city of Trelba Sye.**





**Key features are identified by numbers and letters in the photo below.**



**The doors are numbered 1 to 5. The key feature (carvings) are identified by letters.**

**Feature A:**



**Large face carved in door # 2.**

**Feature B:  
The Corner Triad of Faces**







**Standing by the carved faces is my daughter Deanna. The young lady in white is named Cyndia.**

**The black area above Cyndia is actually an entrance to a tunnel that was dug at some time in the past. It had a length of about 18 feet in 1963. Due to a collapse the tunnel's length was found to be about 10 feet in length in 1972.**

**The tunnel allowed us to determined that the sealing material that covered the door was about a foot thick, and that the space behind the door was filled with decomposed granite.**

**I will return to this picture later on in this writing.**





**Feature C-1  
The Old Man**



**This carved face is of a bearded man looking up to the right.**

**Note that the rear of this carving is covered with lava, that once flowed over the top of the cliff. This tells us that the carved face existed prior to the time that the lava flowed....some 600,000 years ago.**

**c. 600,000 B.C.E. Climatic variations began with the ebb and flow of glaciers encroaching on Europe and Asia – periodically driving the ancestors of man to take refuge in Africa, the Middle East, and perhaps India. Glaciation peaked about every 100,000 years, thereafter, one ice expansion after the other.**

**This was also the beginning of the Pleistocene Epoch, the last of the geologic time scales and the one to take us up to about 11,000 B.C.E., when the Current Epoch began.**

**If the 600,000 year age of the lava flow at Trelba Sye is correct, then we must except as fact that the city was occupied about 350,000 years before the appearance of Homo erectus, and about 475,000 years before the Neanderthals began to walk the Earth.**

**It is taught that the first signs of Cro-Magnon, and Homo sapien sapiens appeared about 92,000 B.C.E. or some 508,000 years after the lava flowed over the city of Trelba Sye.**

**It is possible and also probable that Trelba Sye was abandoned and sealed up because of the considerable volcanic activity that was occurring at the time.**

**Where as most of the carved images found at Trelba Sye appear to be Homo sapien sapiens we must consider the possibly that human kind did in fact devolve and then begin to re-evolve as per the way described in earlier articles of this series.**

**We are certain that Trelba Sye was a city constructed during one of Earth's Golden Ages. It is our belief that the people of this ancient city had contact with several Extraterrestrial races.**

**Returning to the carved heads of the “C” group.**

## **Feature C-2**

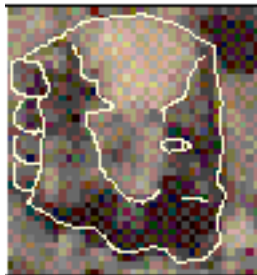
### **The Soldier**



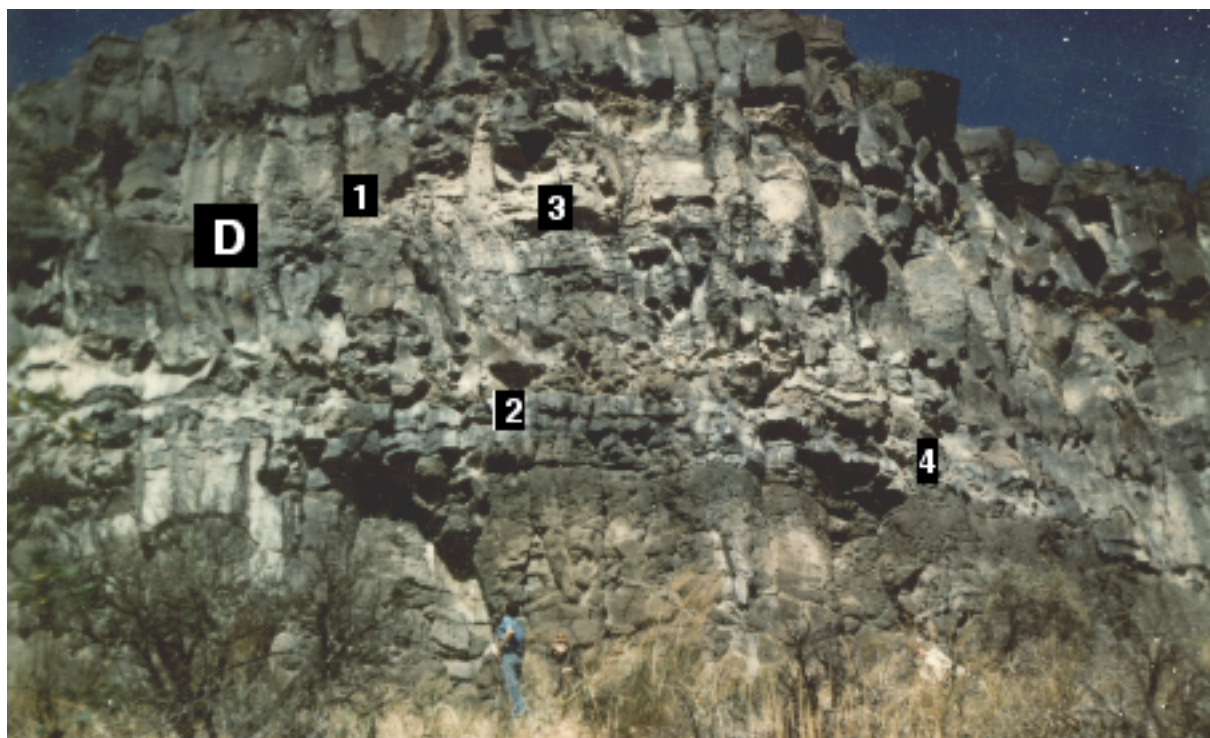
**This carved face is of a man wearing a plumed helmet with a chin strap.**

## **Feature C-3**

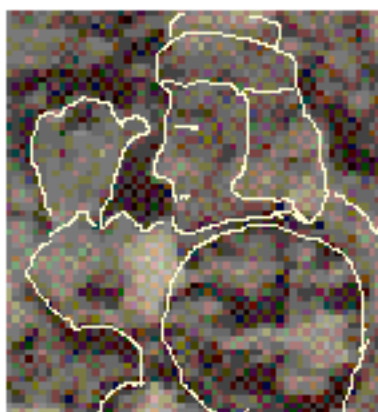
### **The Man With a Hair Roll.**



**All of the carved faces in the "C" group face to the right.**

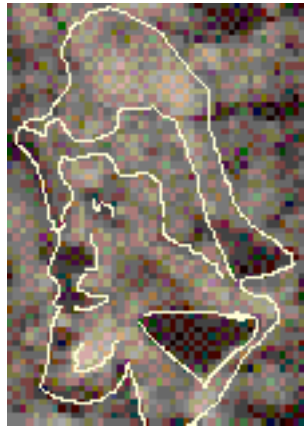


**Feature D 1**  
**Man with Shield**

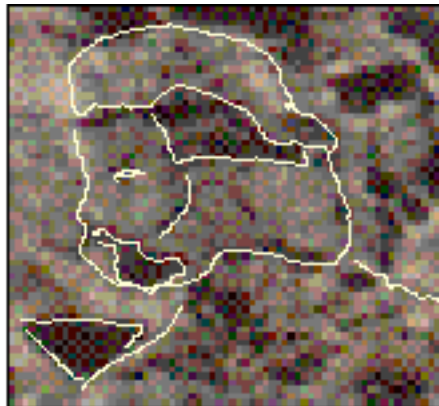




**Feature D 2  
Bearded Man**

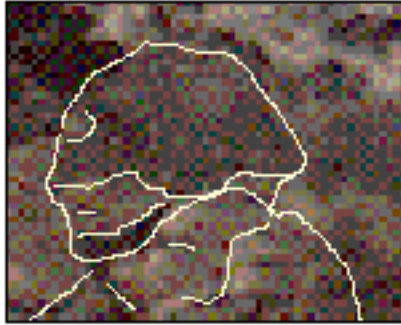


**Feature D3  
Young Man**



**All carved faces in the “D” group face to the left.**

## **Eroded Head at Right Base Corner - 4**



**Please note that there are no identifiable carved images of women or animals at this particular location of Trelba Sye.**

**The height of the Main Door is about 18 feet and its width has been determined to be about 30 feet. Thus the area of the door would be about 540 square feet.**

## **THE ODDITY**

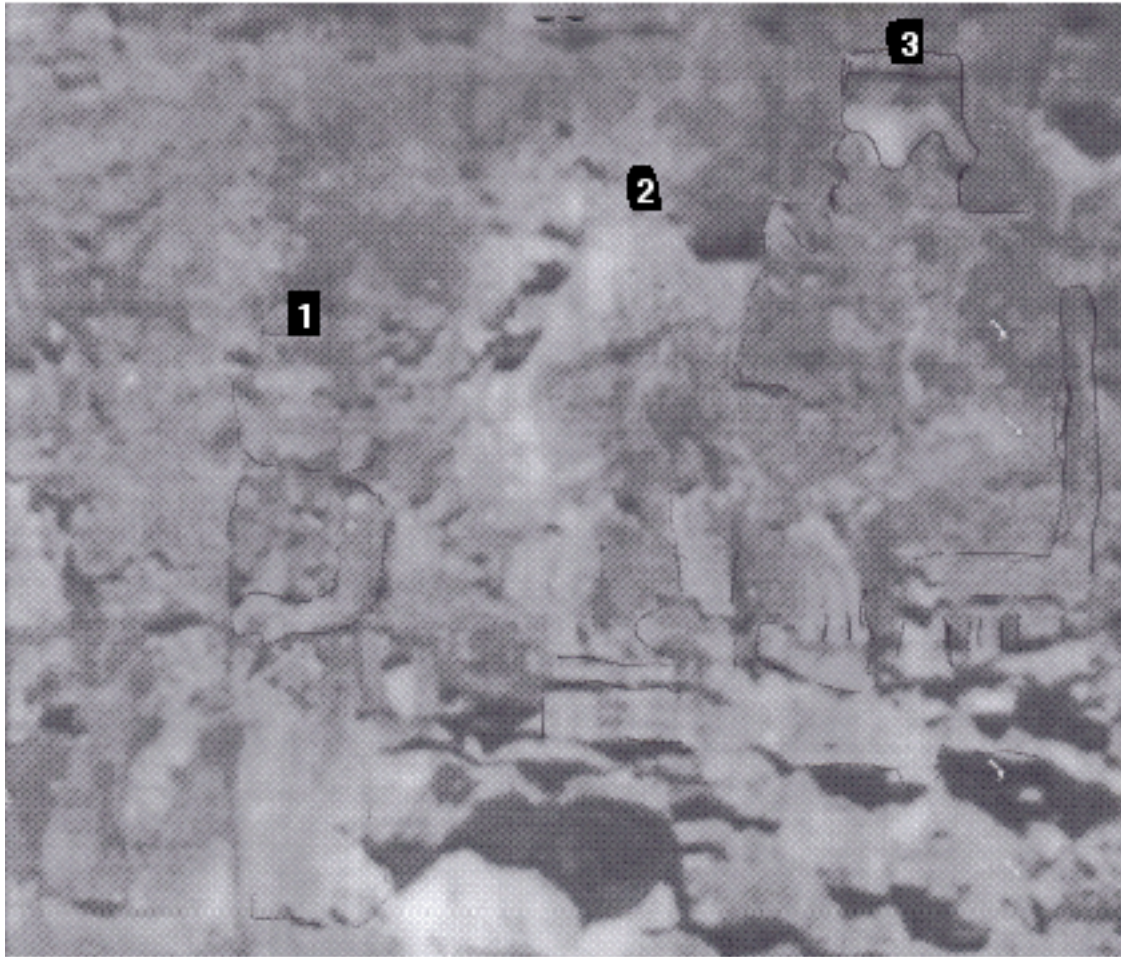
**During the course of preparing this article I reviewed every photograph of Trelba Sye that we have in our procession. The common computer glitch that prevents Jpegs from being reduced to sizes that will fit properly into a paint program was doing its thing, but I persistently attempted to remember how this problem was solved before.**

**I kept producing an enlargement of a certain section of the picture presented below. The enlarged section brought to my attention a carved figure I had never noticed before. This figure has been given the name “The Oddity.”**

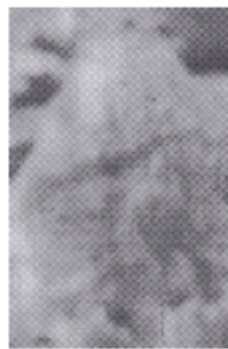


Note the head is of a different type of rock, and is *producing light*. Did our presence activate something ?





1



2



16



**The picture above was taken in 1963 on the day that we discovered Trelba Sye. Any further enhancements seem to make the images worse, so they are presented as is. Figure 1 does appear to be a woman, Figure 2 is definitely the head of a man wearing a helmet, Figure 3 appears to be of a man wearing a “pill box” type of hat and sitting on a chair (throne?). Note his foot rest and also the folds in his garment.**

**Other figures are also present, but it does take an effort to pick them out.**

**The location of the carvings described above is in turn located in the following picture under the banner that says “Throne Scene”**



**Within a mile of the main doors is found the painted image of a dragon. Imagine the quality of a paint that can last thousands of years.**





**The image of the dragon is painted on a stone plug that is rounded at the top. The plug is flanked by flat pylons. The symbol of the dragon has been long known to represent the propulsion system of extraterrestrial space craft. Was Trelba Sye once a space port?**



**The opposite side of the out crop of rock, seen in the first dragon door picture, is shown directly above. Notice the frontal view of another carved and painted dragon.**

**The picture below shows my wife Jo Nell. Behind her can be seen a number of the doors that lead into Trelba Sye.**



**Just before I snapped this picture I caught out of the corner of my eye a small silver disk spinning rapidly near the trees on the right. When the film was developed we were surprised to see the fiery image that left a glowing red tail, as it passed over Jo Nell's shoulder.**





**We believe that within this glowing ball is the silver disk that the Extraterrestrials used that day to watch and listen in on our activities at Trelba Sye.**

**For the past 34 years we have sent at least one research group every two years to Trelba Sye, to check to see if anyone else has discovered the place, and to explore with a purpose to determine the city's true size. *Presently we are certain that the underground city covers several square miles.***



**The picture above, and its enlarged section below was taken in 1992 by Ra Team explorers.**



**The picture shows another entrance (door) into Trelba Sye that was bricked up, but left unsealed.**

**A more recent expedition returned with a very disturbing report. They heard the sound of “blasting” that came from underground, about 2 miles from the “Dragon Door.”**



## **THE DOCUMENTARY**

**For thirty four years we have gathered considerable information about the layout and individual features of Trelba Sye.**

**Only surface scans with ground penetrating radar is left to be done.**

**This equipment will be used to detect hollow spaces and images of items, such a buildings that are present under the lava cap, and roof of the ancient site.**



**GPR**

**It has been our plan to film the GPS operation and other features in a documentary, which we hope will be publicly released.**

**If this documentary project is stopped by those who want the public left in dark about our true ancient past, and about the fact that our planet has been visited for millennia by extraterrestrials, a secondary plan will go automatically into affect.**

**The exact location of Trelba Sye is known by a considerable number of people located throughout the world.**

**There are prearranged indicators that these people will be watching for. If they see, or in some cases don't see these indicators (by a certain time in the future), they will release maps and Global Positioning Satellite (GPS) data that show the world exactly where Trelba Sye is located.**



**At least when you are on your way to Trelba Sye, and you are stopped by mean looking men in camouflage uniforms, carrying M16-s you will certainly know what they are hiding from you.**