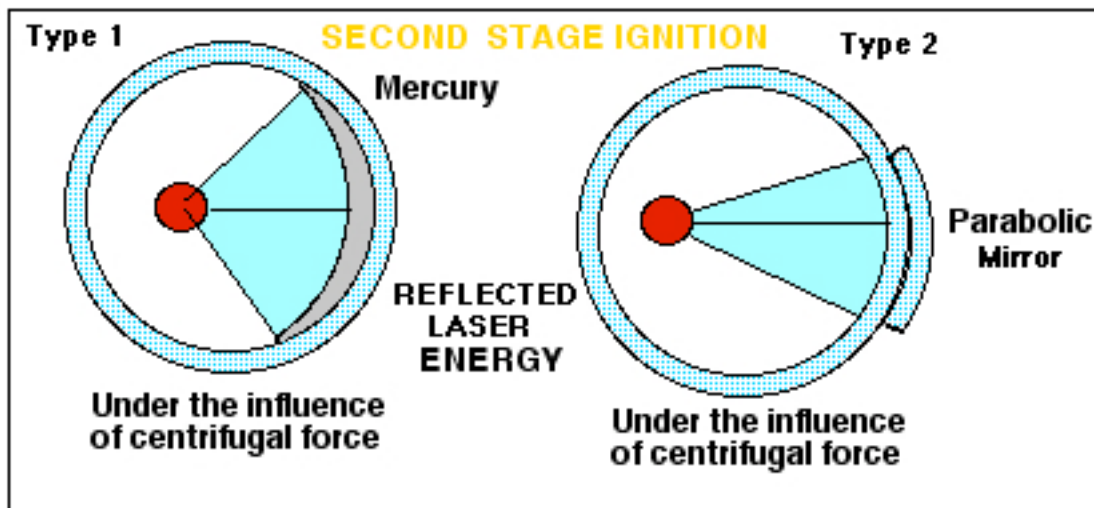
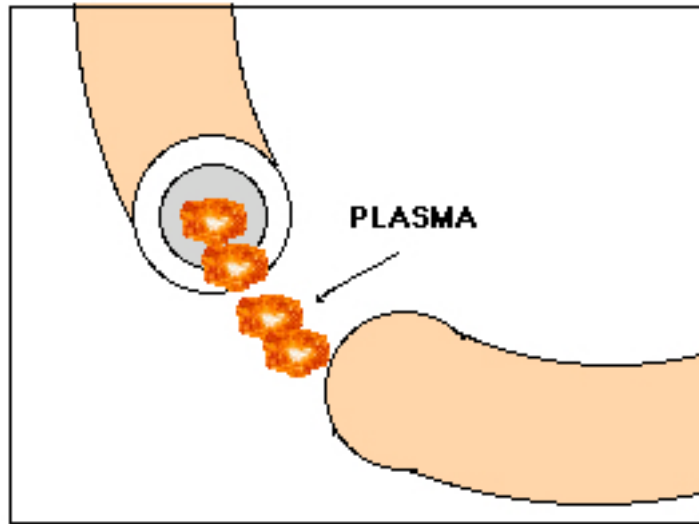


Here is where ET genius is revealed. See next illustration.



The laser energy that passed through the atoms is focused and reflected by the mercury or attached parabolic mirrors back into the imploding deuterium (at the speed of governed light). This reflected laser light has more energy in it than the laser light that began the initial ignition. This time there is less space existing between the atom's particles. Much more laser energy strikes the ignited deuterium and raises its temperature astronomically.

Heat produced by compression (adiabatic compression) can be witnessed when a tire is filled with air. The tire gets warm. Letting the air out of the tire rapidly it can cause frost to form on the tire's air stem.



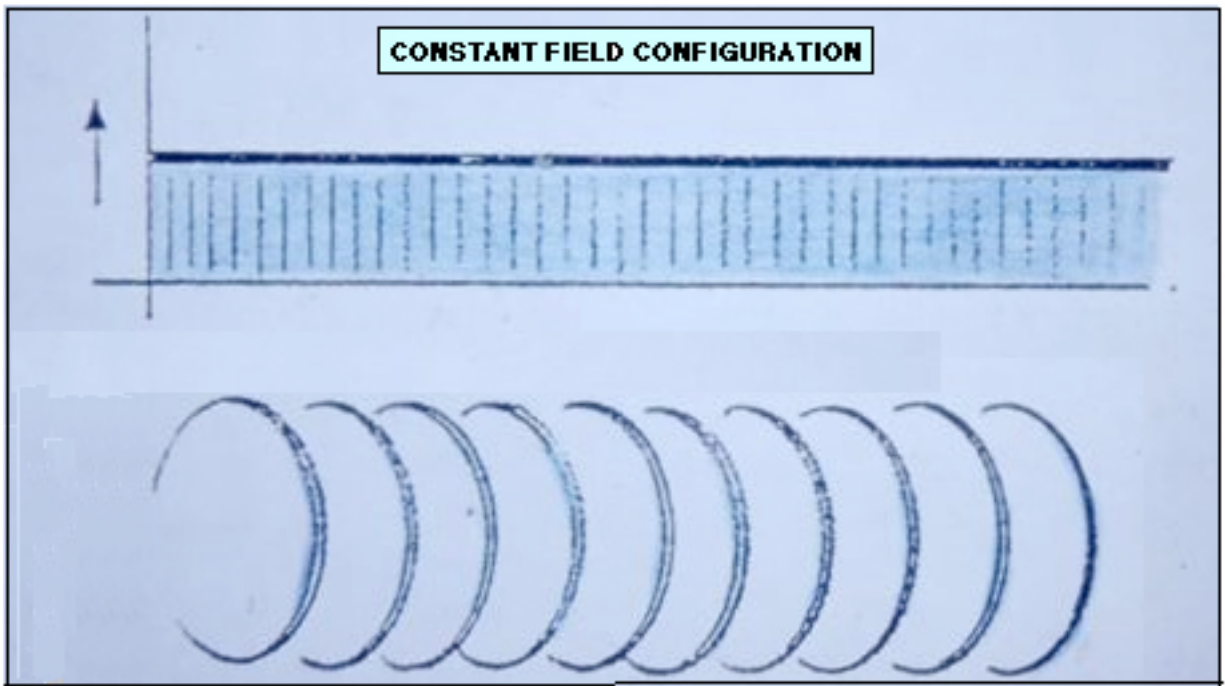
After the plasma is created it must be contained within the torus.

The extraterrestrials contain the plasma they make, using magnetic bottles which have shapes that were “sculpted” by superimposing moving micro waves over a magnetic field.

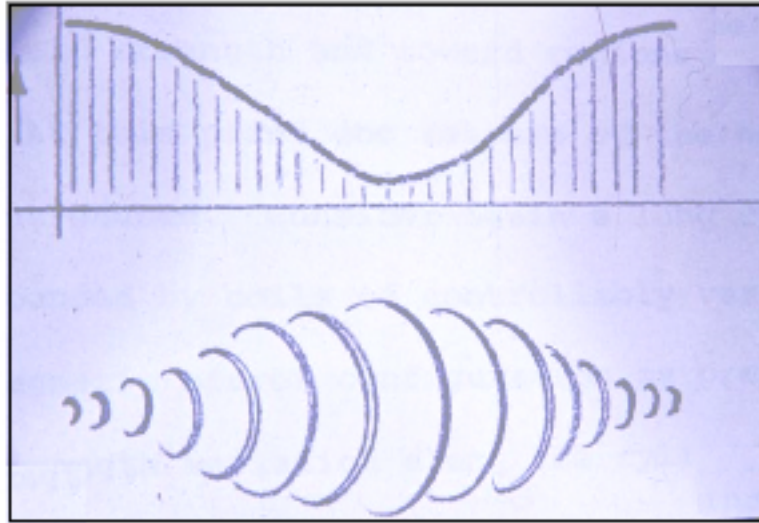
## THE DRAGON

In this section the extraterrestrial method of containing plasma will be described.

The illustration that follows depicts the torus, that is subjected to a magnetic field of a constant strength and form.

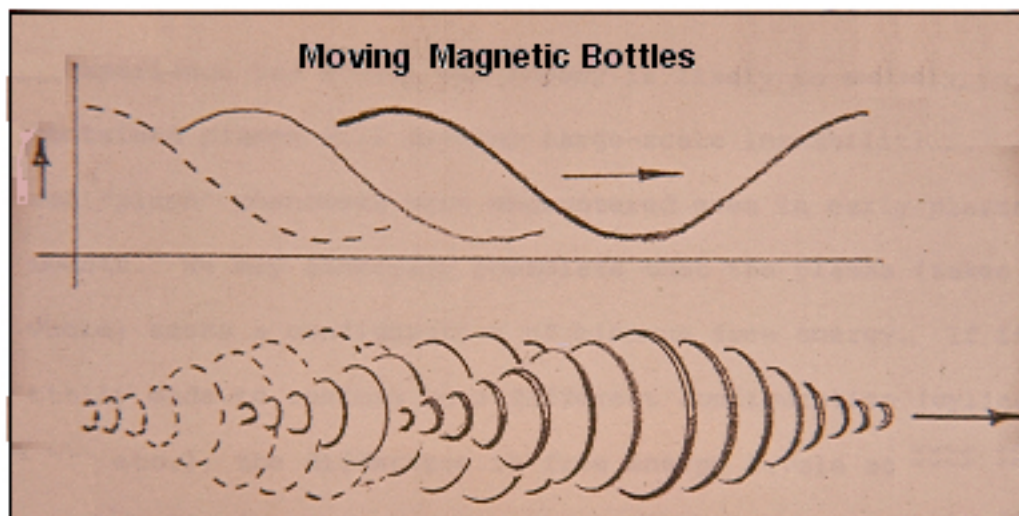


In the upper part of the next illustration is seen microwave activity that is taking place in a circular wave guide that is positioned next to the torus. These micro waves are superimposed over the constant field shown earlier and produce a magnetic plasma containment bottle as shown in the lower part of the illustration.



The micro wave frequency that forms the shape of the containment bottles is 1,420,405,752.7 Hz. This is the hydrogen “resonant frequency” or the frequency that a hydrogen atom naturally resonates at. This frequency has a natural sympathetic relationship with the deuterium that composes the plasma and therefore assists in the plasma containment process.

The following illustration depicts the plasma containment bottles in motion.



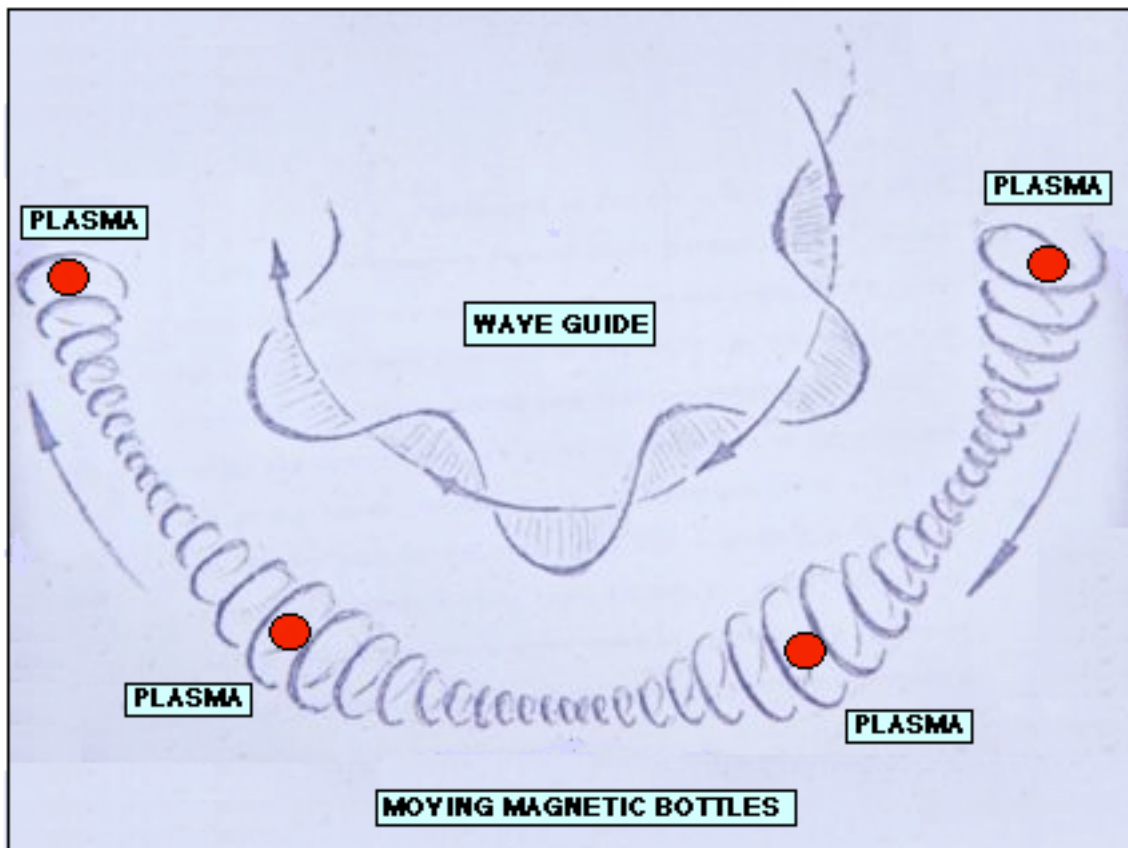
**The created plasma is captured by the moving bottles. Any plasma that escapes one bottle will be captured by the bottle moving behind the one it escapes from. The plasma soon forms into the shape of a sphere and is held together by the same forces that hold the sun in the shape of a sphere. This shape is called the “minimum free energy configuration.”**

**If molten metal is dropped from a tower into water, to cool and harden, it will be found later to be in the shape of a ball or sphere. Buck shot and bee bees are manufactured in this way.**

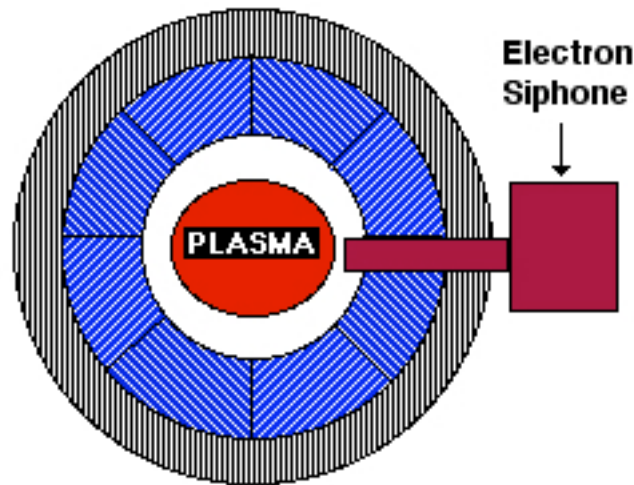


**The next illustration depicts the full body of moving containment bottles. notice that the plasma balls are traveling in the weakest parts of the bottles. This is occurring at a very high speed. In this case the plasma will increase in mass due to this high velocity. Plasma with the size of a sugar cube at these velocities can reach a weight of 5 billion tons. This represents a terrific amount of energy as per Einstein’s equation  $E=MC^2$ .**

## Magnetic Bottles Circling the Torus



After being contained, electrons are drawn out of the plasma. The Plasma is then over-balanced with positively charged protons and a great deal of unemployed (unused) "weak nuclear force." During the acceleration of the plasma, the weak nuclear force is amplified, and its strength becomes relative to the plasma's great mass at near governed light speeds.



The key to anti-gravity is the extraction of electrons from the the created plasma, thus making it over-balanced with protons and useable weak nuclear force which can be amplified by accelleration to very high velocities. The electrons are removed from the plasma by way of an electron siphon, as shown above.

---

### QUESTIONS YET TO BE ANSWERED

It is unlikely that extraterrestrials use rail guns, lasers, and electron siphons exactly in the way they have been shown in this writing. Because if these items were made of materials that we are familiar with - they would be destroyed by the tremendous heat that was produced by the created plasma. It is obvious that lasers and siphon pick-up rods would have to pass through the walls of the containment tube and would definitely foul up its function. Therefore, it is most likely that the plasma is created as described here, but, in another device. The plasma created in this separate device is immediately injected into the craft's containment tube. Several ways of doing this have been deemed feasible.

---

Construction materials unknown of by us, might be used in this space craft. When we think about the fact that the extraterrestrials can manipulate light (moving at speeds that are higher or lower than the governed speed of light) the thought has come to mind that they might have manipulated light lasers. Any ideas of producing a plasma with a manipulated light laser in my case would be highly speculative.

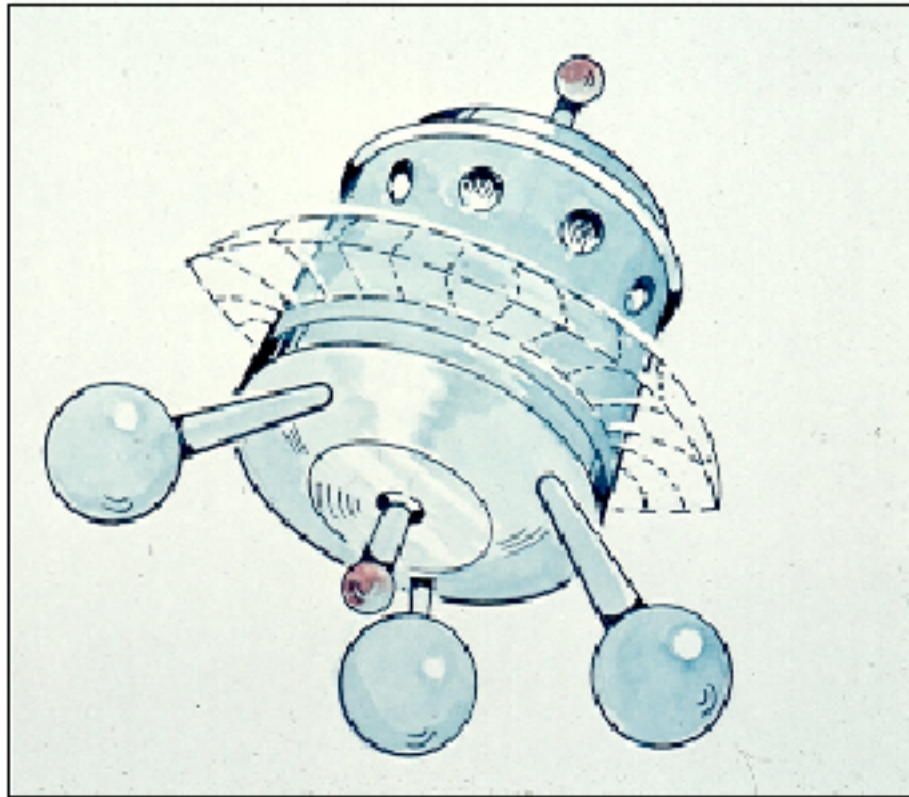
No matter how they actually do it, they truly do. The following information will describe more about how extraterrestrials use these forces to propel their space craft.

This information comes from the study of these space craft in flight, from evidence they have left behind at landing sites and by another unique method of study, which will be described in a later part of this series.

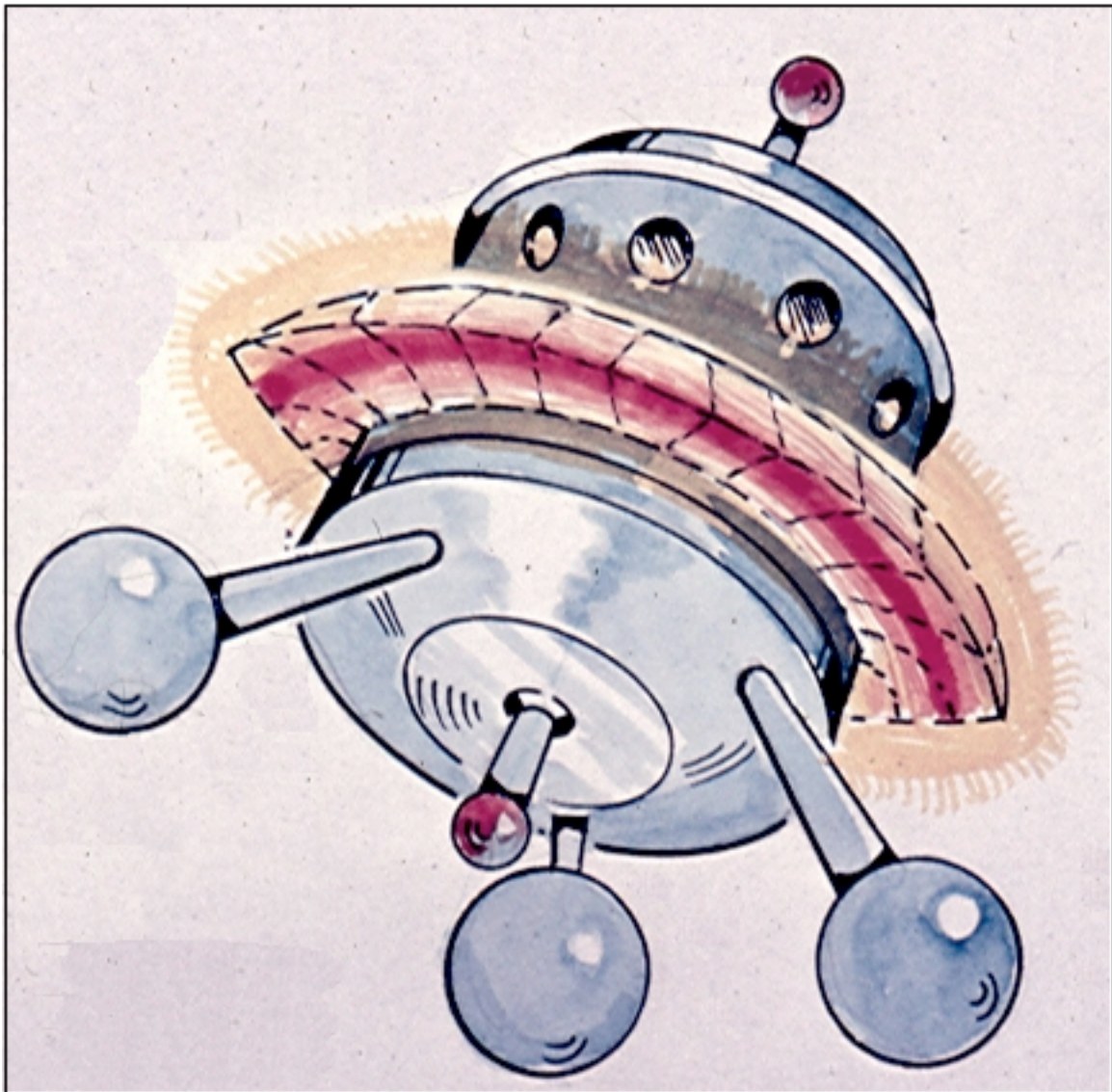


## THE SUN BIRDS

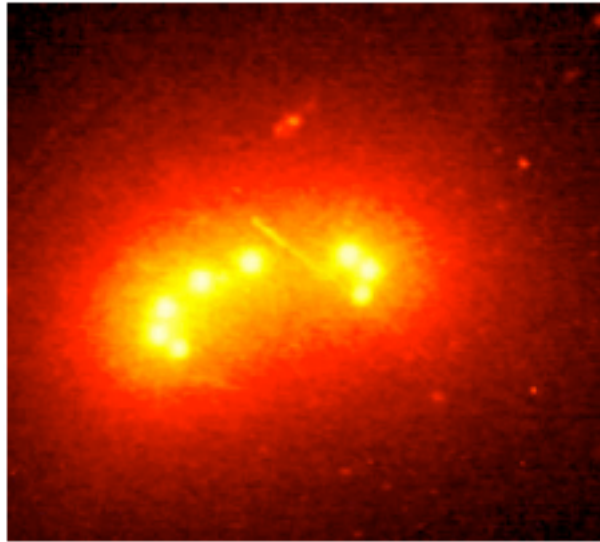
This illustration shows the control cabin of an ancient type of extraterrestrial interplanetary space craft minus its reflecting dish. Please notice that the containment torus that circles the cabin has a tapering flange-like cover. This flange can be moved up and down and be positioned at various angles



This illustration shows the same control cabin, but in addition it shows moving plasma in the torus.

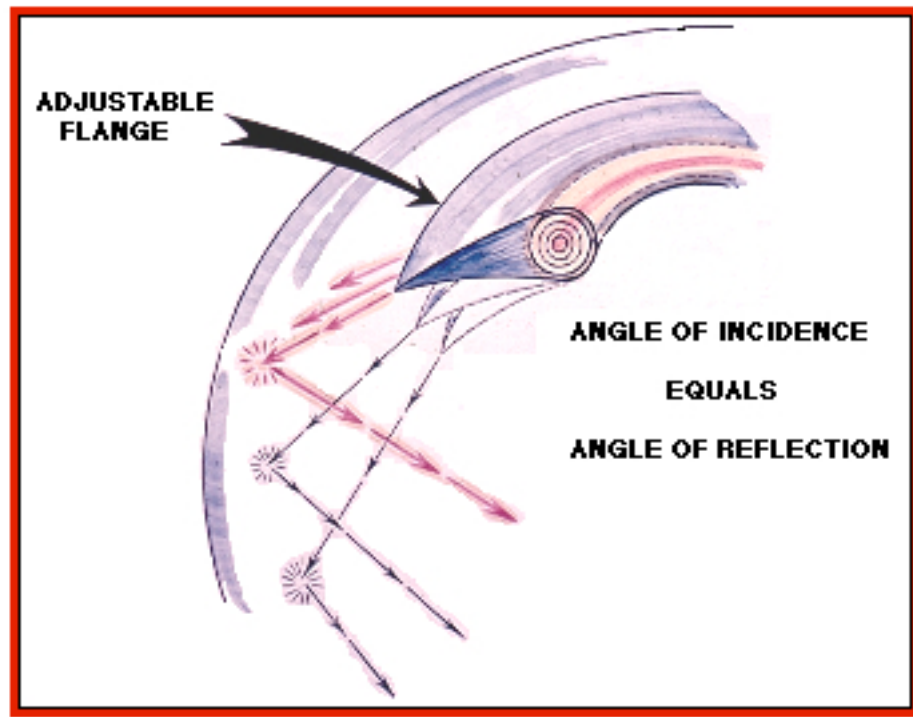


The picture that follows is of an actual extraterrestrial space craft, showing the glowing plasma containment tube. The reddish - orange color of the plasma has a wave length of about 6561. angstroms, which is the most intense visible spectral line of hydrogen (Balmer m3).



One could erroneously conclude that brilliant light emitted from the plasma tube (as shown above) is also accompanied by tremendous heat that is capable of melting the containment tube.

What is actually being seen, is air outside the tube being heated to a point that it too is being converted to a plasma. A plasma that, unlike that in the tube, contains a natural balance of electrons and protons and probably has a much lower temperature than the plasma contained in the tube (?).

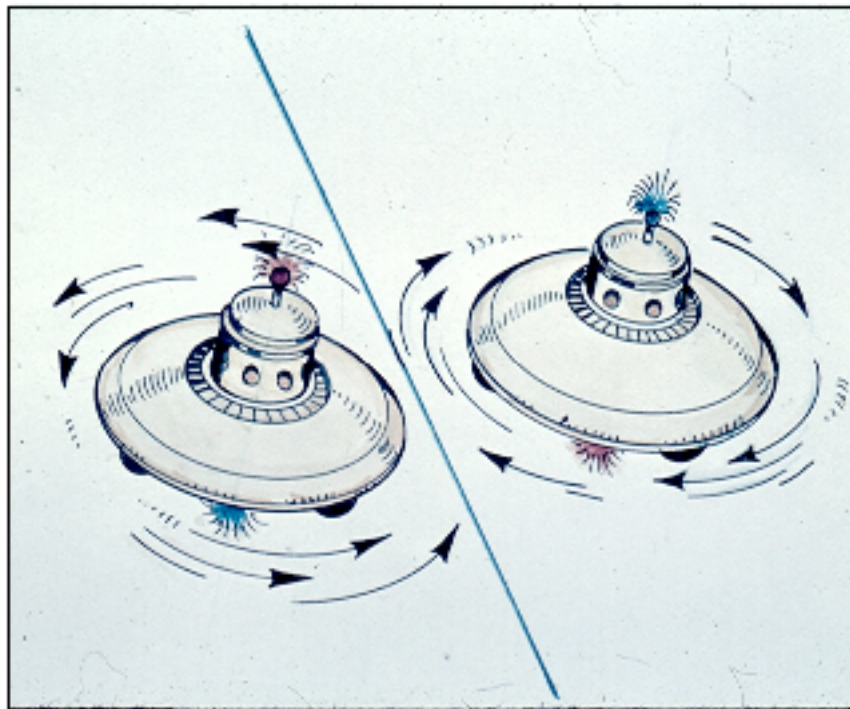


In the illustration above we see the adjustable flange that was introduced earlier. The excess of weak nuclear force in search of free electrons and protons (not part of any atoms structure), travels to the edge of the flange and then flows off the edge of the flange in the direction that the flange is pointed.

In the case of the Earth the flange is pointed at a 23.5 degree angle, which is the axis angle of the Earth relative to the sun. On the planet Mars, the flange would be set near to 25.0 degrees, which is that planet's axis angle relative to the sun.

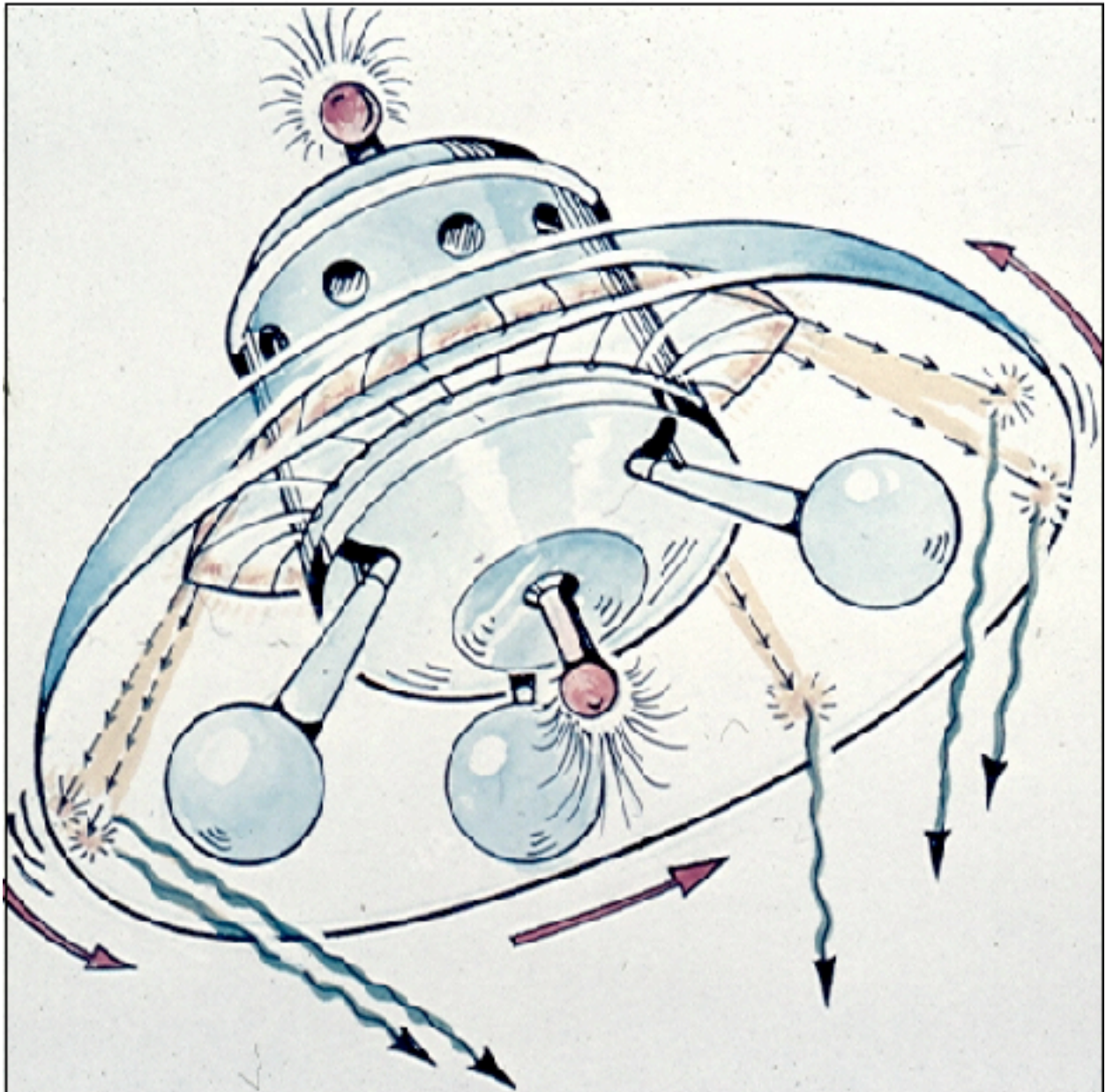
The amplified weak nuclear force originating from the contained plasma, flows until it encounters the craft's parabolic reflecting dish, where it is reflected downward at a 23.5 degree angle. The angle of incidence equals the angle of reflection.

The extraterrestrials rotate their parabolic reflecting dishes counter clock wise north of the planet's equator and clockwise south of the planet's equator.



When the weak nuclear force hits the spinning parabolic dish of the saucer-shaped craft it reflects downward in a conical shaped spiraling vortex that has a tapering angle of 23.5 degrees (in the case of the Earth).





**This vortex is similar to that of a tornado or a hurricane.**



**TORNADO**

**The spacecraft depicted below with its glowing propulsion vortex was photographed in the mid 1960's near Beaver Falls Pennsylvania.**



The picture below shows two extraterrestrial space craft with tapering energy projections oriented downward toward the direction of the Earth. This picture was taken by the crew of an orbiting Gemini space craft.



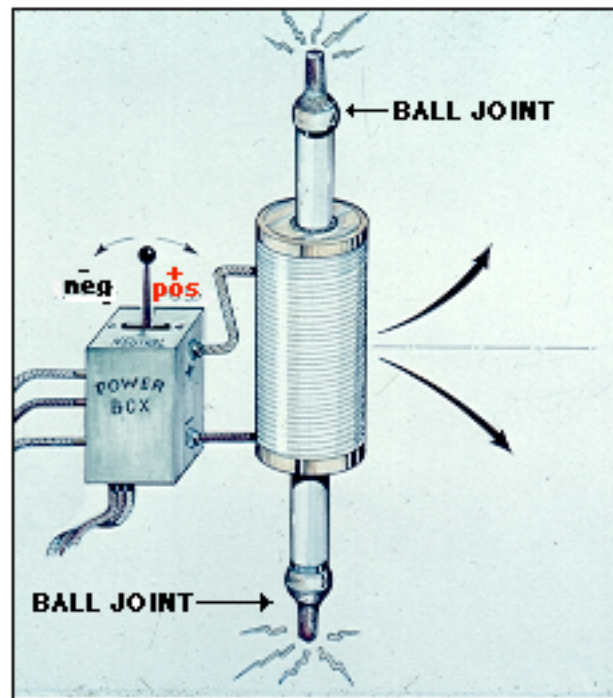
HURRICANE

Water drains counter clockwise north of the planet's equator and clockwise south of the planet's equator. This is called the "Corielis Effect." Hurricanes or Tropical Storms occurring north of the equator or south of the equator spin according to the Corielis Effect. The ET craft's energy vortex is spun to conform with the natural forces that produce the Corielis Effect.



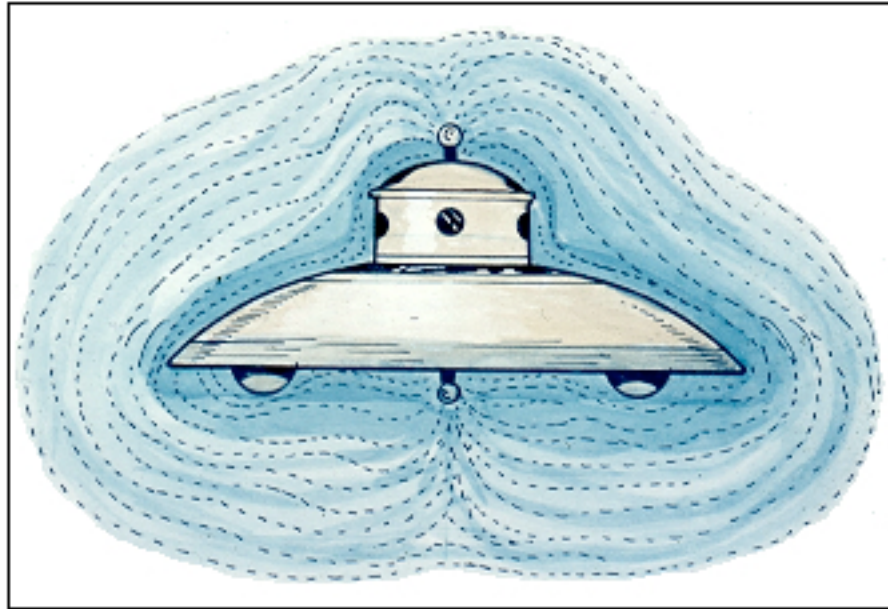
The spiraling vortex of the space craft is calm in its center, like an eye of a hurricane, which is also calm in its center.

In order for the amplified weak nuclear force in the shape of a vortex to participate in the production of the craft's artificial gravitational field, a magnetic field (like that of Earth's) is required. This is accomplished by employing an electromagnetic pole in two sections. One section of the pole protrudes from the top of the cabin of the craft and the second section protrudes from the bottom of the craft. An electromagnetic pole shown as a single unit is depicted below for the sake of explanation.



The illustration above shows an electromagnetic pole featuring a coil of wire around its middle. When electrical current enters the coil at its bottom, the top part of the becomes positive and the bottom becomes negative. A reversal of current flow reverses the positive and negative ends of the pole.

Please note that the ends of pole are in the form of *ball joints* .

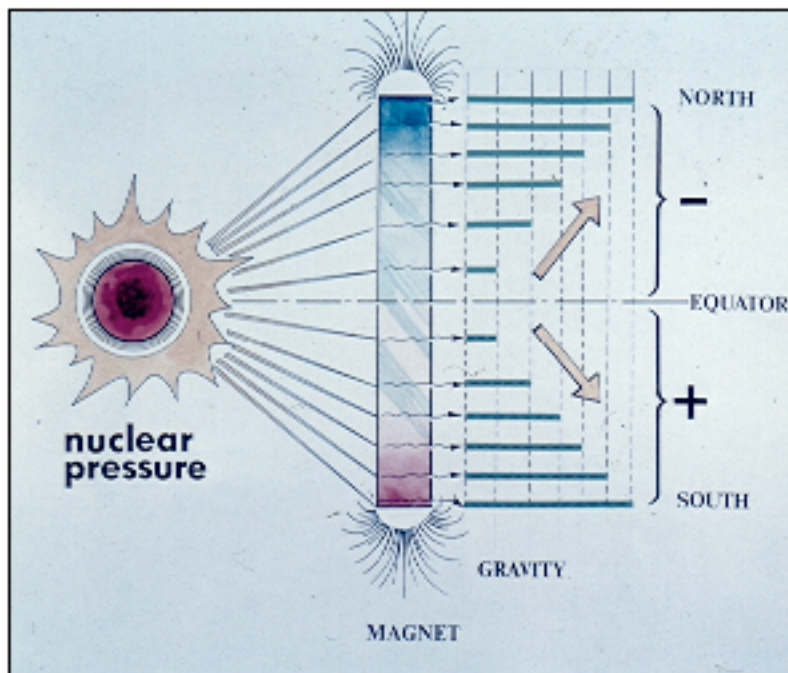


**The pole produces a magnetic field around the saucer similar to that of a planet (such as the Earth).**

**North of the Earth's equator the operators of the spacecraft set the the bottom of the pole for negative; thus the craft's artificially amplified weak nuclear force in the shape of a spiraling vortex) enters into the negative part of the surrounding magnetic field. This procedure is reversed south of the planet's equator.**

**The strength of the craft's magnetic field is controlled in the same way a person would control the volume of a radio.**

**When the resistance is taken out of the volume circuit of the radio, its sound becomes progressively louder. When the resistance is taken out of the volume circuit of the electromagnetic coil of the saucer's magnetic pole, the magnetic field around the space craft becomes stronger and stronger.**



When the spacecraft's surrounding magnetic field is progressively strengthened, its artificially produced gravitation field increases in strength proportionately. Eventually, the spacecraft's artificially produced gravitational field become equal to the strength of the planet's natural gravitational field.